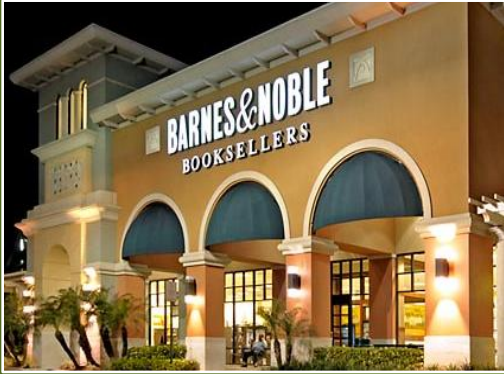


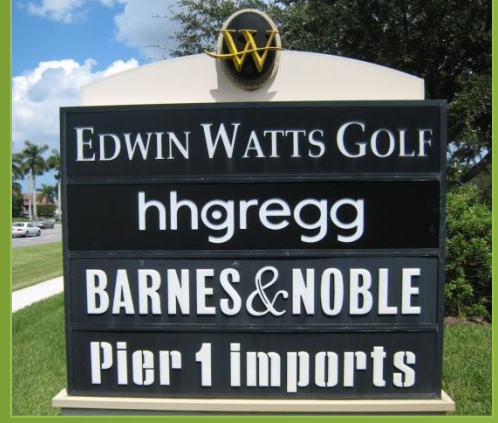
Retail For Lease Palm Beach County

SHOPPES OF WELLINGTON GREEN, 10500-10590 Forest Hill Blvd., Wellington, FL 33414



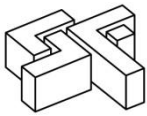
Leasing Information

Location	Fronting Forest Hill Blvd., just west of US 441/SR-7 & approximately 4.2 miles from Florida's Turnpike.			
Availability	In-Line:	5,478 SF		
	Anchor:	39,521 SF (can subdivide)		
Property Amenities	<ul style="list-style-type: none"> • Anchored by Barnes & Noble and hhgregg. • Current tenants include Pier 1 Imports, Edwin Watts Golf, Starbucks, Panera Bread and the Vitamin Shoppe. • Zoning: MUPD 			
Area Highlights	<ul style="list-style-type: none"> • Adjacent to the Mall at Wellington Green with Macy's, Dillard's, City Furniture/Ashley Furniture Home, JCPenney, Nordstrom and 160 specialty stores • Close proximity to numerous residential, equestrian, golf & tennis communities, and Wellington Green Medical Center 			
Traffic Counts	Forest Hill Blvd. - 45,720 vpd / State Road 7 - 43,846 vpd			
Parking	Spaces: 661 spaces - 5.1/1,000 SF			
Demographics		<u>1-mile</u>	<u>3-miles</u>	<u>5-miles</u>
	Population (2010 estimate):	4,838	55,332	149,491
	Population (2015 projected):	5,702	61,359	157,982
	Daytime Population:	4,128	20,057	49,909
	# of Households	2,304	20,956	60,097
	Average Income:	\$107,698	\$101,755	\$82,686
	Median Income:	\$77,372	\$78,223	\$64,622



Representative Tenants:

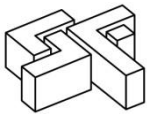




Retail For Lease Palm Beach County

SHOPPES OF WELLINGTON GREEN, 10500-10590 Forest Hill Blvd., Wellington, FL 33414





Retail For Lease Palm Beach County

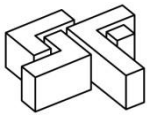
SHOPPES OF WELLINGTON GREEN, 10500-10590 Forest Hill Blvd., Wellington, FL 33414

TENANT ROSTER

<u>BAY</u>	<u>IN-LINE TENANTS</u>	<u>SQFT</u>
A	Barnes & Noble	24,243
B1	Pier 1 Imports	10,587
C1A	Available	5,478
C1C	Hoffman's Chocolates	2,495
C2	Edwin Watts Golf Shops	5,673
C3	Panera Bread	4,000
C4	Pearle Vision	2,835
D	hhgregg	29,001
E	Available	39,521
TOTAL IN-LINE		123,833

<u>BAY</u>	<u>OUTPARCEL TENANTS</u>	<u>SQFT</u>
OP-1	Starbucks	1,500
OP-2A	La Granja Restaurant <i>Coming Soon</i>	2,450
OP-2B	Vitamin Shoppe	3,055
TOTAL OUT-PARCEL		7,005





Retail For Lease Palm Beach County

SHOPPES OF WELLINGTON GREEN, 10500-10590 Forest Hill Blvd., Wellington, FL 33414

Located on Forest Hill Blvd. just west of US 441/SR 7 adjacent to the Wellington Green Mall

